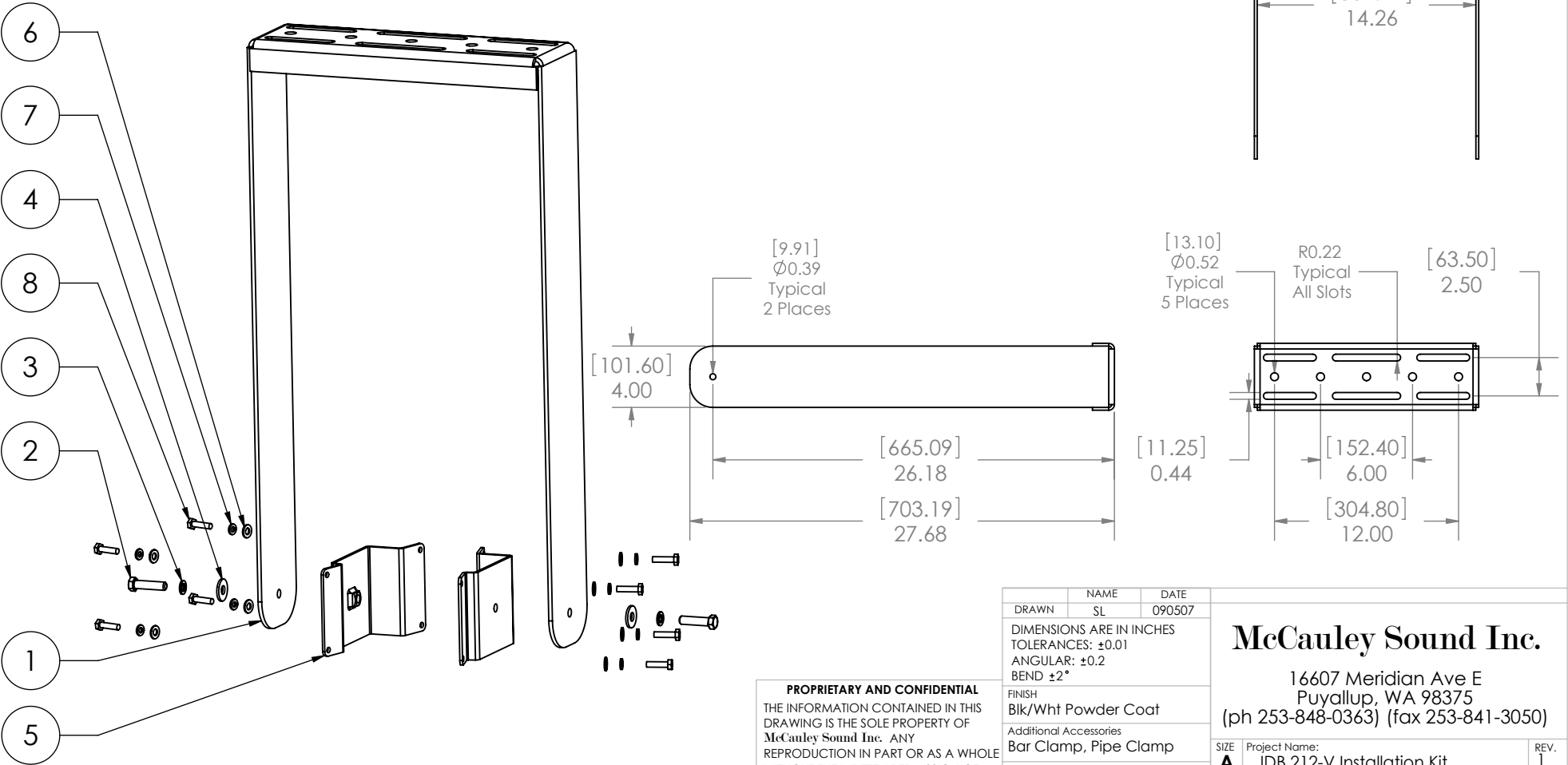


ITEM NO.	PART NUMBER	QTY.
1	901-2030	1
2	3-8-16 X 1500 Grade 8 Hex Hd Cap Screw Yellow Zinc	2
3	3-8 Lock Washer PFC9 Yellow Zinc	2
4	3-8 Flat Washer PFC9 Yellow Zinc	2
5	901-9001	2
6	1-4 Flat Washer Structural Steel F436 Yellow Zinc	8
7	1-4 Lock Washer Zinc	8
8	0420 x 1000 Grade 8 Hex Cap Screw Yellow Zinc	8

ZONE	REV.	REVISIONS	DATE	APPROVED
		DESCRIPTION		



PROPRIETARY AND CONFIDENTIAL
 THE INFORMATION CONTAINED IN THIS
 DRAWING IS THE SOLE PROPERTY OF
 McCauley Sound Inc. ANY
 REPRODUCTION IN PART OR AS A WHOLE
 WITHOUT THE WRITTEN PERMISSION OF
 McCauley Sound Inc. IS PROHIBITED.

DRAWN	NAME	DATE
SL	SL	090507
DIMENSIONS ARE IN INCHES TOLERANCES: ± 0.01 ANGULAR: ± 0.2 BEND $\pm 2^\circ$		
FINISH Blk/Wht Powder Coat		
Additional Accessories Bar Clamp, Pipe Clamp		
DRAWING NOT TO SCALE		

McCauley Sound Inc.

16607 Meridian Ave E
 Puyallup, WA 98375
 (ph 253-848-0363) (fax 253-841-3050)

SIZE	Project Name:	REV.
A	IDB.212-V Installation Kit	1